



SOLIDARITY IN FACE OF THE STATE OF THE WORLD, Acting when it hits close to home.

I'M DOING BETTER THAN THE WORLD...

Whilst we're doing well personally, we perceive the outside world as 'broken'

I'll manage in the future... even if the situation is faltering

"Current": rating from 0 to 10



Personal

6.4



My Country

4.8



The World

4.6

"Future": rating from 0 to 10

Personal

↑ 6.7

My Country

4.9

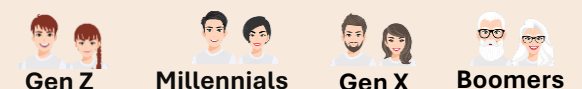
The World

4.7

...GIVEN THE STATE OF THE WORLD, WE SEE OURSELVES AS VERY UNITED – WHICH WE ARE ABOVE ALL IN OUR DAILY LIVES...



88% consider themselves supportive (very + quite a bit + somewhat)



41%

40%

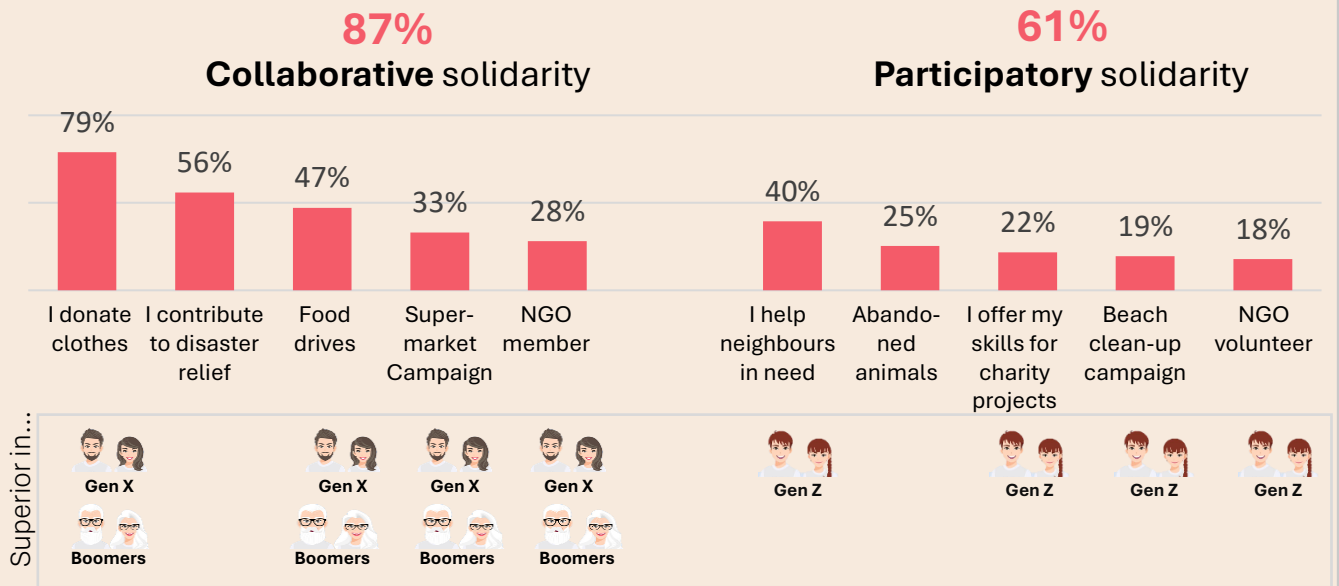
36%

44%

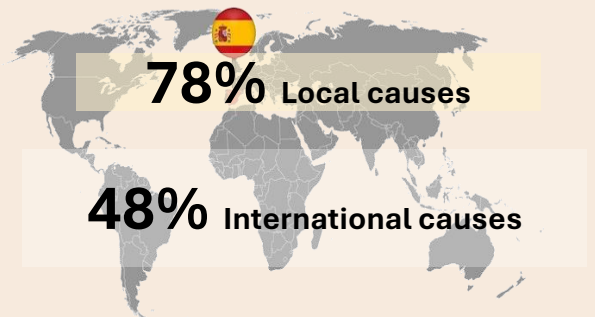
Very or quite supportive

4 in 10 very or quite a bit

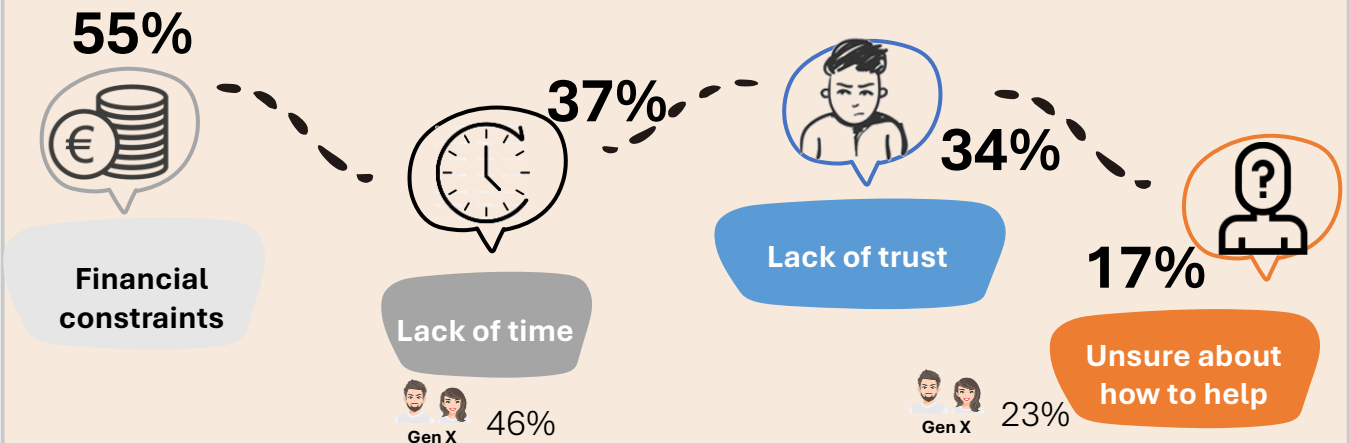
The generation gap reveals differing attitudes: THE ELDERLY DONATE, THE YOUNG GET INVOLVED



Solidarity is activated when we feel **close** to a **cause**; when a cause is distant or **global**, **solidarity fades**



THE WILL IS THERE, BUT FINANCIAL CONSTRAINTS, LACK OF TIME AND MISTRUST PREVENT US FROM BEING MORE SUPPORTIVE



Technical details

Online survey
n= 4,774 people
Aged 16 and over, resident in Spain
Proportional weighting by gender, age and region

